



Head Teacher: Mrs S. Pennington **Tel No:** 01772 335 030 **Website:** <http://www.clayton-le-woods.lancs.sch.uk>
Facebook page: <https://www.facebook.com/claytonlewoodsprimary> **Address:** Back Lane, Clayton-le-Woods, Chorley, PR6 7EU

Monday Worship

As part of our celebration worship on Monday afternoons, I'd love to see some pictures of children and their achievements at home that we can share with the whole school. This could be any activity they've done where they have a great sense of achievement, from riding a bike for the first time to beating their grandad at chess.

Please send your pictures to p.howard@clayton-le-woods.lancs.sch.uk and they'll be added to a slideshow that will be played coming in to and leaving worship.

Many thanks, Mr Howard

HEADTEACHER'S COMMENTS

The Christmas Fair raised £1100 which was amazing. Thank you to everyone who supported the event. The PTFA is currently raising money to improve ICT provision across the school including Ipads.

There is a PTFA meeting after school on Thursday, January 25th. Children will be able to attend Care Club free of charge if a parent is attending the meeting. Please come along and share your ideas.

S.Pennington

ATTENDANCE

Attendance figures for
Week ending 12th January 2018
Congratulations to Class 6 for our
highest attendance last week.
**Attendance for last term was
96.33%**

Last week's attendance by class

1 st	Year 6	96.15%
1 st	Year 4	95.17%
3 rd	Year 5	94.44%
4 th	Year 3	92.86%
4 th	Year 2	91.55%
6 th	Year 1	89.33%
7 th	Year R	88.62%

92.33% for whole school attendance.
Our target this year for attendance is 97.5%
Don't forget your child will miss important lessons if they do not attend.

Holidays will ONLY be authorised for
EXTREME circumstances as per the policy of
the school taken from Lancashire County
Council (LCC).

DEADLINE FOR PRIMARY ADMISSION SEPTEMBER 2018 IS 15TH JANUARY 2018.

PRE-SCHOOL – Pre-school has places using the 15 hours funded, 30 hours funded sessions and payable sessions available for immediate start.

Cheques payable to school should be as follows:

- for lunches to: 'LCC Schools Income Account'
- Cheques for Care Club to: 'Clayton-le-Woods CEP Child Care Club'.
- Cheques for trips to: 'Clayton-le-Woods CE Primary School'
- Cheques for PTFA to 'Friends Clayton le Woods CE School'



- Please **do not** park on the pavement outside the Pre-school classroom.
- Take care when driving through the car park as there are children around.
- **DO NOT** park either on the **yellow zig-zags** or across the road from the zig zags during the busy drop-off and pick-up times.

Jewellery No jewellery apart from watches are allowed to be worn.

Prices

Book Bag	£4.75
PE bag	£3.50
School Meal	£2.20
Care club	£3.50 PER HOUR

HEADLICE

Don't forget to check your child's hair each week for Headlice. It is important that children's hair is checked on a weekly basis so that any head lice can be dealt with quickly and before they are allowed to spread too far.

Dates for your Diary

Dates may be subject to change

Monday	Cheerleading after school Yr 3/6
Tuesday	After School Football Yr 2/6
Wednesday	Before School Curling Yr3/6
Wednesday	After School Netball Yr3/6
Thursday	After School Football Yr 3/6
Thursday 18 th Jan 18	Pizza & BBQ Chicken Day - Sch Lunch promotion £2.20
3.30pm Thursday 25 th Jan	PTFA meeting, children can go in to Care Club for free while parents are at the meeting



Reminder

**Please remember if your Child is absent please
ring the absence number and leave a Voicemail.
Please also ring School if your Child will be in
late, this way we can plan lunch numbers.
01772 335 030 –
Option 1 to report an absent Child**

Unclaimed Christmas Fair Raffle Prizes

Holly Willis Pink 314
Blue 26
Blue 10
Pink 295

100 CLUB WINNERS FOR DECEMBER 17

1ST PRIZE C THOMPSON
2ND PRIZE B ANDERTON
3RD PRIZE D ANDERTON

INFANTS

Infants require tights, socks and spare clothing for when children have accidents. If any clothing has been sent home previously please send them back into school

HOMEWORK

Ash – Draw a picture of their favourite part of The Little Red Riding Hood story and write about it.

Oak – Design your own tree & make it out of recyclable materials.

Elm – Questions & statements.

Year 3 – Maths activity, place value, multiplication & division.

Year 4 – multiplication of 3 numbers.

Year 5 – CGP book - division.

Year 6 – Reading comprehension & spellings

Car Park Questionnaire

If not done so already please can you complete the questionnaire that is on the school website regarding the car park on Back Lane.

Payments into school

Please can all payments whether cash or cheques be sent into school in an envelope marked with the child's name, class and what the money is for. This will make sure the money does not go astray and will make it easier in the office to allocate it.
Many thanks.

YEAR 5 BEWERLEY TRIP

If not done so, please return the consent and medical information form given out at the meeting.

LOST PROPERTY The lost property box is very full with jumpers and coats. The box is located near the ICT room and Year 6. If your child has lost any jumpers, PE kit etc please check the box for them.

Staying Safe Online over the festive season – useful tips for Parents and Carers



As the festive season gets underway, many children and young people may receive gifts they can use to go online so it is a good opportunity to give some thought to how we can support them to stay safe whilst having fun.



1 Gifts such as Tablets, Gaming Consoles or Smartphones can all be used to go online so it is important to think ahead about what safety features are available and set them up in advance. Our colleagues at the UK Safer Internet Centre have some very useful checklists with



things to consider when choosing different devices: Tablets - http://bit.ly/uksic_tablets
Gaming Consoles - http://bit.ly/uksic_gaming Smartphones - http://bit.ly/uksic_phones

Tip: The Safer Internet Centre also has some excellent advice in their Parents' Guide to Technology and includes device-specific settings for different models:

www.saferinternet.org.uk/advice-centre/parents-and-carers/parents-guide-technology



2 Setting up Parental Controls on the home internet connection may seem a little daunting but the highly-regarded Internet Matters website has some really useful guidance from major broadband providers about setting up online filters.



Tip: Use the Interactive guide on the website at: www.internetmatters.org/parental-controls/interactive-guide



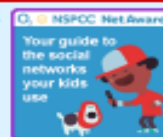
3 Agreeing some Behaviours and Expectations before children receive devices can help to prevent some difficult conversations later. Additionally, our colleagues at Childnet have a handy Family Agreement which can be useful, especially for younger children – see: www.childnet.com/blog/family-agreement



Tip: Good agreements work both ways so if family-time involves no tech, this applies to adults too!



4 Not sure about Snaps, Streaks or Insta? The variety of Apps and Social Media tools can seem bewildering at first but the very-highly recommended NetAware resource from O2 and the NSPCC is an excellent way to find out more about the different apps and games your child may use – see: www.net-aware.org.uk



Tip: NetAware also has an app for your smartphone to stay in touch with the latest updates.



5 Games can be over-looked but remember most modern consoles connect online and often have in-built web browsers. Ensuring appropriate gaming content is also important so make sure to check what PEGI-rating different games have, including the descriptions such as Sex, Violence or Bad Language – see: www.pegi.info

Tip: Some games also offer in-game purchases for additional content – if so, use vouchers rather than credit cards to help save you from unexpected bills later.



6 Don't forget the Positives! Being aware of the potential risks the online world poses is very important but don't forget it also offers us immense opportunities and benefits. If you still aren't too sure, get involved and ask your child to teach you about their online



world and what they do (and don't) like.

Top Tip: The LSCB's 'Useful Tips for Parents and Carers' can be found at the top of the Parents and Carers section of the LSCB Online Safety website and also contains a variety of really useful information: www.lancshiresafeguarding.org.uk/online-safeguarding/parents-and-carers

APPEAL

Alleys Cats & Kittens is a non-profit cat rescue for lost/injured/strays/feral street cats & kittens and we are in desperate need for any Cat/kitten wet & dry foods, woodchip cat litters, toys, accessories, beds, feeder dishes, scratch posts, old bedding, towels, litter trays, cat carriers, catteries, sheds, metal meshing anything to help support all of our volunteer with the street cats in the North West. Without continued support from our community the street cats/kittens wouldn't have us.

Items can be collected/handed over to Carl Edwards (Shelby's dad) at the end of school 3.15-3.40pm or you can call 07986670174 (Lisa Shelby's mum) to arrange collections etc... or can be dropped off at our home address of 34 Broadfield Drive Leyland PR25 1GJ.

Please could you kindly help assist us with our plea?

Kind regards

Lisa Chadwick

SCHOOL TEA TOWELS

We still have tea towels for sale at £5 for one or £8 for two. Cash or cheques payable to 'Friends of Clayton le Woods CE Primary School.' Call into the office to buy one.

Merry Christmas
PTFA.

Spring Term 2017

08/01/18	School reopens	
25/01/18	PTFA Meeting	Meeting in school at 3.30pm. Children can go into Care Club during the meeting.
30/01/18 to 06/02/18	Travelling Book Fair.	This will be open after school each day.
04/02/18	Education Sunday	10 am St Johns Church Whittle. Children will be taking part in the service. They should wear school uniform. The service lasts about an hour. Parents and families welcome.
08/02/18	PTFA Disco	3.45pm-5.15pm. £3 per child including snack. Sweets available to buy. Clothes can be brought to change into. Children must be collected from the hall and signed out. Please access school via the main entrance and leave by hall fire door.
09/02/18	Close for half term	School closes at 3.30pm. There will be Care Club as usual Non uniform day for winning team only (team points).
19/02/18	School reopens	
26/02/18	YEAR 5 Residential	Y5 trip to Bewerley Park. Monday to Friday.
01/03/18	World Book Day	Non uniform. Children should come dressed as book characters.
07/03/17	Class photographs	Tempest
09/03/18	PTFA Film Night	Straight after school. £3 per child including a snack and a drink. There will be different films suitable for different ages. Pick up will be at 5.30pm. Parents MUST sign children out. Please enter school by the main door and pick up children from the hall.
21/03/18 22/03/18	Parents Evening 4PM-7PM	Letters for appointments will be sent out week commencing 26/02/18.
22/03/18	TEAM POINTS	Winning team can wear non-uniform.
23/03/18	Sport Relief	Voluntary Donation of £1 for Sport Relief. Children can come to school in non-uniform with a sport theme if they wish.
23/03/18	School closes at 2pm. There will be no Care Club	
09/04/18	School reopens for the Summer Term	

SCHOOL & ACADEMY PLACES – SEPTEMBER 2018

**Do you have a child due to start
Primary or Secondary School / Academy
in September 2018?**

Do you live in Lancashire?

**Apply for a school or academy place
online at:
www.lancashire.gov.uk/schools**

You must apply if your child has a 4th birthday between 1st September 2017 and 31st August 2018 and/or if your child is in his or her last year of primary school from 4th September 2017. Please apply even if an older brother or sister is already attending your preferred school or academy. Non-Lancashire residents must approach their home Local Authority.

CLOSING DATES FOR APPLICATIONS FOR SEPTEMBER 2018

SECONDARY	31 OCTOBER 2017
PRIMARY	15 JANUARY 2018

**If transport is a consideration,
please view the home to school transport policy arrangements
at www.lancashire.gov.uk/schools**